



# Cases to the upper and lower jaws many pieces of oral implant placement was facial recovery



HAJIME OKUDERA  
TOSHIMITSU OKUDERA

## Introduction

Times are seeking anti-aging.  
Be obtained naturally youthful forever beautiful is the wish of all the people.  
However, in the long dental treatment it was followed by an era that runs counter to its request.  
It I went a denture base of treatment that do not adapt physiologically.  
But it has become possible to provide a true rejuvenation surgery by the techniques of emergence and jaw reconstruction in recent years implant. I introduce viewed the case this time.

## Case Report

Treatment and materials.

For absorption of the jawbone is large, it was attempt to jaw reconstruction tries to the bone substitute material and PRP.

We were able to jawbone for the recovery of the appearance of the face.

Use implants implants18 this use made of OSSTEM CorporationUS II 3.3~4.0mm.

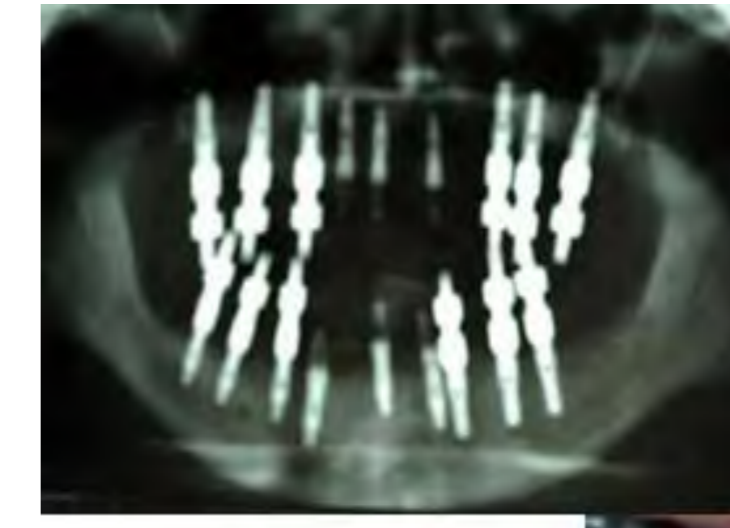
We have compared the face after face of the recovery has been recovered using constant before and face side.



PRE OPE



In the maxilla  
anterior, jawbone is  
rapidly absorbed with  
the loss of tooth.



X-RAY



## Histologic evaluation

Results and discussion.

Used without the current trouble in '10 postoperative course.

changes in facial features and becomes the current 55-year-old.

Well extreme change even moisture in the skin of the facial appearance than chewing stimulus.

Spiritual rejuvenation of himself even greater purpose in life of enormous a person.

Therefore, we believe that the in the conventional type of denture base from these results was the treatment of anti-aging that can not be achieved.



With the  
superstructure,  
it was recovered.



## Discussion

By facial analysis measurement, numerically improvement has been expressed.

Stable at 10 years postoperative course, it has been maintaining a complexion and features.

Dental implant that has been maintained for the regeneration and conservation of the jaw and facial appearance to long time has been proven to contribute to the extremely anti-aging.

Measurement	Value	Mean	SD	Min	Max
a: Inner-canthal distance	32.0	32.0	0.0	32.0	32.0
b: Nose-ridge	47.0	47.0	0.0	47.0	47.0
c: Width of the oral fissure	53.0	53.0	0.0	53.0	53.0
d: Upper facial height	81.0	81.0	0.0	81.0	81.0
e: Nose height	47.0	47.0	0.0	47.0	47.0
f: Upper lip height 1	18.0	18.0	0.0	18.0	18.0
g: Lower facial height	40.0	40.0	0.0	40.0	40.0
h: Upper lip height 2	24.0	24.0	0.0	24.0	24.0
i: Upper lip vermilion height 1	14.0	14.0	0.0	14.0	14.0
j: Upper lip vermilion height 2	14.0	14.0	0.0	14.0	14.0
k: Lower lip vermilion height	14.0	14.0	0.0	14.0	14.0
l: Convexity of the oral fissure	1.67	1.67	0.00	1.67	1.67
m: Lower facial height	30.0	30.0	0.00	30.0	30.0
n: Upper facial height	81.0	81.0	0.00	81.0	81.0

Measurement	Value	Mean	SD	Min	Max
a: Nasolabial angle	100.0	100.0	0.00	100.0	100.0
b: Ia-ch-sto	65.0	65.0	0.00	65.0	65.0
c: U-ch-sto	80.0	80.0	0.00	80.0	80.0
d: Ia-ch-li	10.0	10.0	0.00	10.0	10.0
e: Ia-E-line	11.0	11.0	0.00	11.0	11.0
f: Ia-E-line	2.50	2.50	0.00	2.50	2.50
g: pm-I-plane	6.00	6.00	0.00	6.00	6.00
h: sm-I-plane	8.00	8.00	0.00	8.00	8.00
i: li-I-plane	4.00	4.00	0.00	4.00	4.00
j: li-I-planab	13.0	13.0	0.00	13.0	13.0
k: labio-I-plane	6.00	6.00	0.00	6.00	6.00
l: gg-I-plane	8.00	8.00	0.00	8.00	8.00
m: en-ch	4.00	4.00	0.00	4.00	4.00
n: sn-ppg	3.00	3.00	0.00	3.00	3.00
o: sn-ppg/axch	0.00	0.00	0.00	0.00	0.00

