

# STUDY ON CLINICAL APPLICATION OF PRP - Effect of Clinical Approach on Soft Tissue Skin -

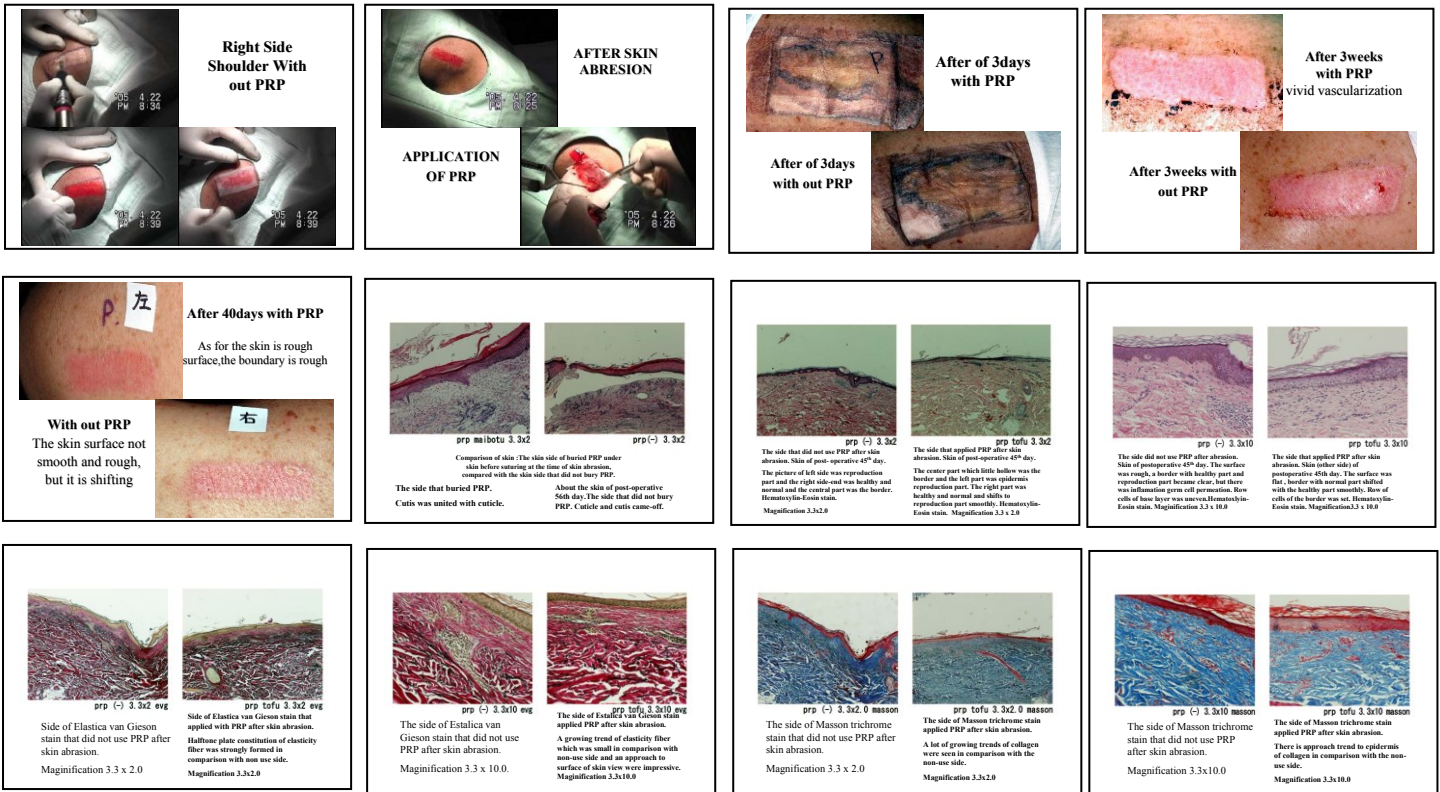
DR.Iwane Saito   DR.Shigeru Kubota   DR. Hajime Okudera

## Purpose :

The Growth factor such as PDGF and TGF discharged from a blood platelet affects reproduction tissue process of wound part. It is said that it promotes differentiation of soft and hard tissue cell,an increase. We examined a clinical Healing effect in a hard tissue and had reported it here. This time I report a soft tissue, because I examined in particular a wound healing change at the time of cuticle detachment from clinical stand point.

## Method :

A Healthy male of 58years old had diabetes in the past. For reproduction healing ability observation at the time of cuticle detachment,I did abrasion by diamond point of both shoulders in size of 5×1.5 cm and deleted cuticle PRP on skin damage and applied antibiotics ointment to right shoulder and put silicon gauze.



## Result :

Sense of incongruity continued in non- PRP side and a lot of fluid were accepted by gauze. The surface of PRP side was smooth surface and The boundary was flat. NON-PRP side was surface roughness, and the boundary protruded.

## Consideration & Conclusion :

It was good in a tendency of healing by naked eye observation in the side to use PRP clearly. And there was a little sense of incongruity with low value and PRP was good with case by VAS method of objective expression for pain a patient. I will increase a case in the future and use tissue inspection together at the same time and want to investigate it finely.